

EUROFLEETS CONFERENCE:

EVIOR portal perspectives

Dick M.A. Schaap – MARIS

June 2013

EUROFLEETS 1:

initial European Virtual Infrastructure in Ocean Research (EVIOR), by way of an integrated information portal:

- **providing up-to-date information about research vessels (RVs),cruise programmes, completed cruises and special equipment**
- **demonstrator for a Generic Cruise Planning System**
- **prototype for a Dynamic Vessel Tracking & Events System.**



EUROFLEETS 1:

- EVIOR integrates **existing modules** from SeaDataNet (pan-European marine and ocean data management infrastructure), EurOcean and POGO (Partnership for Observation of the Global Oceans)
- has gathered entries together with all RV operators. **Full European coverage**. Cooperation with SeaDataNet, EurOcean, POGO, ISOM and ERVO





Eurofleets

Towards an Alliance
of European Research Fleets



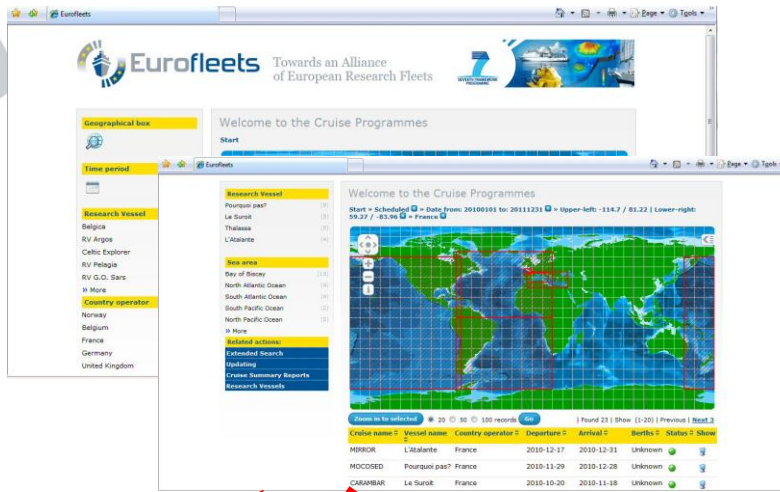
European Virtual Infrastructure in Ocean Research (EVIOR)



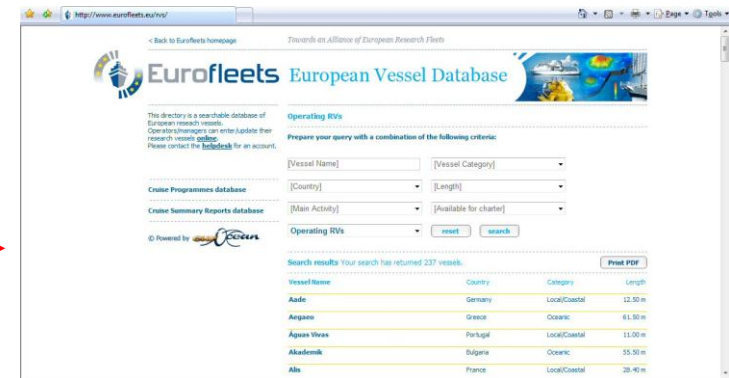
Sharing information on planned, current and completed cruises and on details of European research vessels and specialized equipment
Giving e-access to underway events information, sailing tracks and current position of European research vessels



Cruise Programmes



ICES Ship code as linking pin



Research Vessels



Cruise Summary Reports

Geographical box



Time period



Research Vessel

Polarstern (13)
 Belgica (8)
 G.O. Sars (7)
 Sonne (5)
 Maria S. Merian (4)
 » More

Country operator

Germany (30)
 Norway (10)
 Belgium (8)
 France (6)
 United Kingdom (3)
 » More

Discipline

Biological oceanography (15)
 Physical oceanography (13)
 Marine geology (8)
 Chemical oceanography (6)
 Fisheries and aquaculture (6)
 » More

Sea area

North East Atlantic Ocean (limit 40W) (8)
 Southern Ocean (7)
 Baltic Sea (5)
 South Atlantic Ocean (5)
 North Sea (4)
 » More

Related actions:

[Extended Search](#)
[Updating](#)
[Cruise Summary Reports](#)
[Research Vessels](#)
[Large Expendable Instruments](#)

Welcome to the Cruise Programmes

Start » Scheduled



Zoom in to selected

20 50

Cruise name	Vessel name	Country
ANT-XXVIII/3	Polarstern	German
ANT-XXVIII/2	Polarstern	German
ANT-XXVIII/1	Polarstern	German
ANT-XXIX/10	Polarstern	German
ANT-XXIX/9	Polarstern	German
ANT-XXIX/8	Polarstern	German
ANT-XXIX/7	Polarstern	German
ANT-XXIX/6	Polarstern	German
EURO-BASIN SW Iceland 2013	Bjarni Saemundsson	Iceland

Details

Input date	8/13/2012 10:10:51 AM
Cruise name	ANT-XXVIII/3
Status	Scheduled
Shipcode	06AQ
Vessel name	Polarstern
Ship operator	F. Laeisz Shipping Group
Country operator	Germany
Departure	2014-07-30
Arrival	2014-10-07
Berths	Unknown
Departure port	Tromsø
Arrival port	Bremerhaven
Specific area	Arctic Ocean
Sea area	Arctic Ocean
Latitude1	53
Latitude2	70
Longitude1	4
Longitude2	15
Discipline	Cross-discipline
Chief scientist name	Prof. Dr. Rüdiger Stein
Chief scientist email	Ruediger.Stein@awi.de
Chief scientist organisation	Alfred-Wegener-Institute for Polar- and Marine Research
Funding agency	Alfred-Wegener-Institute for Polar- and Marine Research
Objectives	geosciences, biology, physical oceanography
CSR reports	Click here to go to the Cruise Summary Reports

Cruise Programmes



Cruise Programme database total



Country	Cruise	Country	Cruise
Belgium	229	Netherlands	92
Estonia	5	Norway	246
Finland	17	Poland	62
France	161	Portugal	29
Germany	304	Romania	23
Greece	43	Spain	88
Iceland	20	Sweden	87
Ireland	172	Turkey	41
Italy	74	United Kingdom	151
		TOTAL	1844

Welcome to the Cruise Summary Reports

Search

Free search

Country of ship

Project

Cruise name/nr

Discipline

Ports

Country of institute

© Powered by SeaDataNet

Welcome to the Cruise Summary Reports

Search results

20 50 100 records

[Refine query](#) | [New query](#) | Found 8358 | [Show \(1-20\)](#) | [Previous](#) | [Next 20](#)

Platform/Ship Name	Country of ship	Cruise name	From	To	Show
Haakon Mosby	Norway	2013606	2013-03-14	2013-03-18	
KBV 592	Sweden	2013K07	2013-03-14	2013-03-14	
Unknown					
G.O. Sars	Norway				
KBV 001 Poseidon	Sweden				
KBV 592	Sweden				
Sagita	Slovenia				
Unknown					
Haakon Mosby	Norway				
KBV 002 Triton	Sweden				
Magnus Heinason	Denmark				
KBV005	Sweden				
Haakon Mosby	Norway				

Details

[Refine query](#) | [New query](#) | [Results](#) | Found 8358 | [Show 1876](#) | [Previous](#) | [Next](#)

Details of 2010614 (BSH20103265)

General Information

Platform/Ship	Haakon Mosby
Cruise name	2010614
Cruise begin	2010-07-31
Cruise end	2010-08-17
Port of departure	Tromsø
Port of return	Longyearbyen
Chief Scientist(s)	Hanne Sagen - Nansen Environmental and Remote Sensing Center
Responsible Laboratory	University of Bergen
Country	Norway

Location

General Ocean Areas	Barents Sea Norwegian Sea			
Marsden squares (S,N,E,W)	287 (70.0, 80.0, 10.0, 20.0) 288 (70.0, 80.0, 0.0, 10.0)			
Bounding Box(es)	South	West	North	East
	70	0	80	10
	70	10	80	20

Specific Geographic Areas

Fram Strait.
Central, eastern Fram Strait 78 26 N-79 13 N and 0-10 E, this area included the Molloy deep.
Van Mijenfjorden in Svalbard.

Objectives

Description	<p>A physical oceanography cruise with main tasks to:</p> <ul style="list-style-type: none"> -deploy three acoustic tomography moorings in the Fram Strait -conduct CTD survey in the Fram Strait -recover (by ROV) and service two bottom-mounted RDI ADCPs (Storfjorden sill and west of Spitsbergen) -conduct standard hydrography section Soerkapp Vest -deploy five moorings in Van Mijenfjorden -conduct process studies on mixing in Van Mijenfjorden by using current, small scale hydrography and microstructure measurements.
-------------	---

Cruise Summary Reports



Cruise Summary Reports - totals

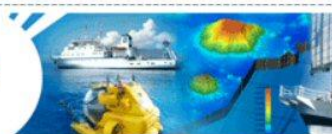
9

Year	No. of Cruise Summary Reports	No. of countries
2005	888	21
2006	947	24
2007	985	23
2008	1400	24
2009	1363	22
2010	1546	21
2011	835	21
2012	420	19





Eurofleets European Vessel Database



This directory is a searchable database of European research vessels. Operators/managers can enter/update their research vessels [online](#) or by contacting the [helpdesk](#).

Operating RVs

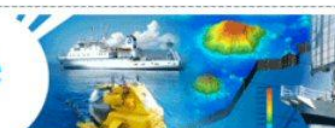
Prepare your query with a combination of the following criteria:

[< Back to Eurofleets homepage](#)*Towards an Alliance of European Research Fleets*[Cruise Programmes database](#)[Cruise Summary Reports database](#)[Large Exchangeable Instruments database](#)

© Powered by 



Eurofleets European Vessel Database

[< Back to Search](#)

Status	Operating
Main activity	Multiple activities
Operating area	Other
Country	United Kingdom
ICES code	74JC
NODC code	74JC
Call sign	ZDLP
Year built	1991
Homeport	Stanley
Length	99.04 m
Avail. for charter	Yes
Last update	09.02.2009

This directory is a searchable database of European research vessels. Operators/managers can enter/update their research vessels [online](#) or by contacting the [helpdesk](#).

© Powered by 

James Clark Ross

[Print PDF](#)

Contact Information

Owner	British Antarctic Survey (BAS)
Operator	British Antarctic Survey (BAS)
Contact person	Chris Hindley
Address	High Cross Madingley Road CB3 0ET Cambridge United Kingdom
Telephone	+44 0 1223 221497
Fax	+44 0 1223 362616
Website	http://www.antarctica.ac.uk/living_and_working/research_ships/rrs_james_clark_ross/index.php
Email	CJHH@bas.ac.uk
Observations	--

Technical Details

Main Dimensions

Length	99.04
Freeboard to Work Deck (m)	3.3
Draft (m)	6.4

Main Vessel Activity

Main Activity	Multiple activities
----------------------	---------------------

Research Vessels Database

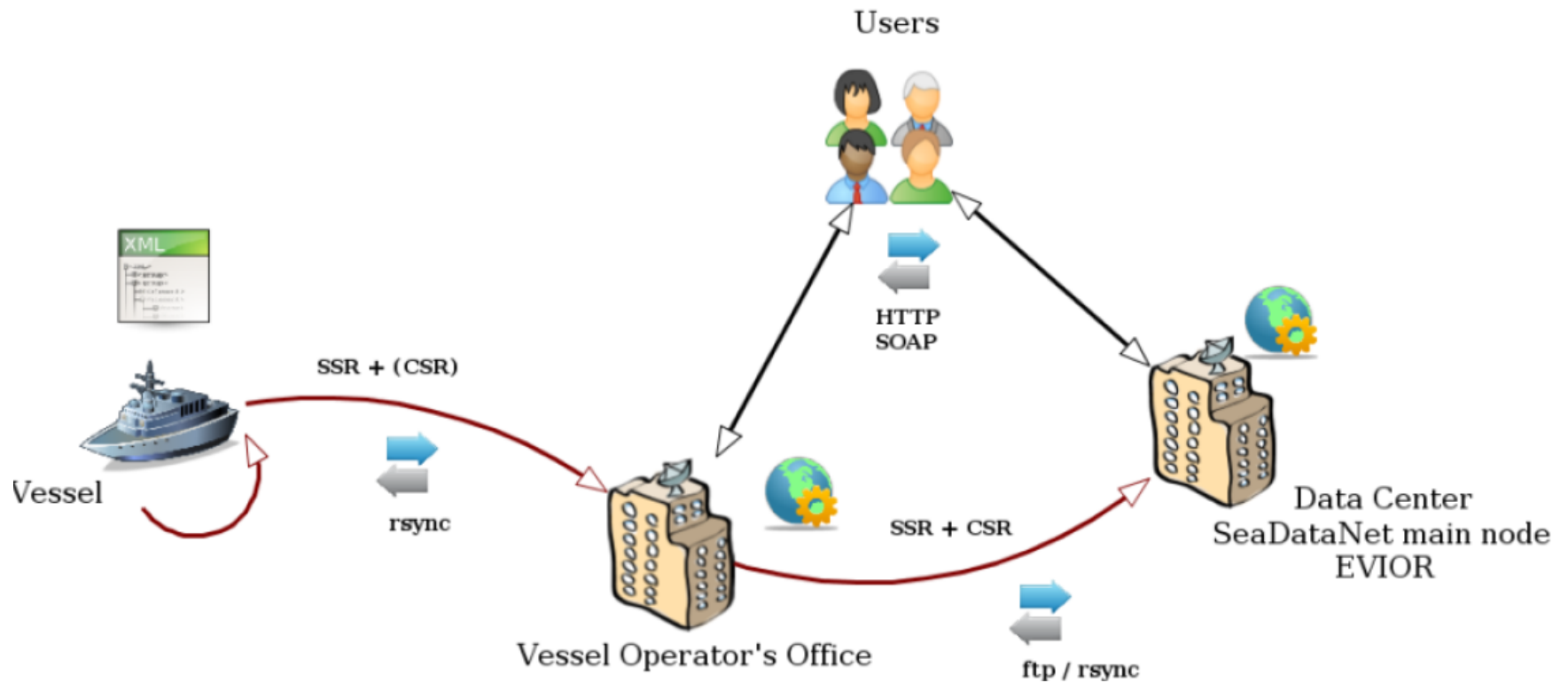


Prototype for a Dynamic Vessel Tracking & Events System

- giving dynamic cruise tracks and present position of vessel of selected RVs on map with position, speed and bearing
- Including daily Ship Summary Reports (**SSR**) of events as registered in an onboard system for underway instruments
- underway instruments are described as **SensorML** files. The data and capabilities are retrievable by an **Sensor Observation Service (SOS)**



Transfer of SSR and CSR





Eurofleets

Towards an Alliance
of European Research Fleets



Select Research Vessel

- ☐ Sarmiento de Gamboa
- ☒ Hesperides

Select mode

- ☐ dynamic position, bearing and speed of selected RV
- ☒ track-chart from prototype start to present with geographic positions, speeds and bearings

Retrieve the 24 hours Ship Summary Report (SSR) and related log of events by clicking on any position of the vessel track.

- ☐ Off
- ☒ On



vessel_name	Hesperides
vessel_c174	SDN:C174:198:29HE
last_navigation_update	2013-04-11T11:47:28
last_date	2013-04-11T11:47:27
last_lat	-22.1494274

Date	Speed	Bearing
2013-03-03T21	11.0	304.05
2013-03-05T22	11.7	301.19
2013-03-05T23	11.8	305.64
2013-03-06T00	12.4	320.53
2013-03-06T01	13.3	321.44
2013-03-06T02	11.5	309.13

EUROFLEETS 2 => further development of EVIOR

Ultimate goal is to establish a common system for giving e-access to underway and operational information and data from sailing research vessels. Foreseen as:

- a generic RV boardsystem, to be installed and configured at research vessels, capable of recording any possible event, ranging from a sample taken or an observation done to any malfunction occurring;**



- an en-route Cruise Summary Reporting (CSR) system integrated into the RV boardsystem with output to the EVIOR portal, giving dynamic cruise track and position, an overview of events, and first level inventory of oceanographic measurements made and samples taken during the cruises;
- a linkage between the shipboard metadata and data systems to the EVIOR portal for giving users opportunities for direct access to operational data for selected situations.



EUROFLEETS 2 EVIOR implementation:

- Developing new features in the **EUROFLEETS Automatic Reporting System (EARS)** that was developed for recording any possible event
- Standardization of the data acquisition process by adopting **OGC Sensor Web Enablement (SWE)** technologies to streamline the transfer of metadata and data, together with **SeaDataNet** and JERICO



EUROFLEETS 2 EVIOR implementation:

- Further developments and maintenance of the **database services** for Research Vessels, Cruise Programmes, Cruise Summary Reports and Special Equipment
- Further development of a generic **Cruise Planning System**



Expected results of Eurofleets 2 activities (WP4 + WP13)

- implementation of the “**virtual fleet** “**concept** for a coordinated and cost-effective use of European RVs by providing up-to-date information on cruises
- streamlining the **transfer** of metadata and data from RVs to data centres at shore to users
- giving **e-access** to underway data

