

# **Towards an alliance of European research fleets**

## **EUROFLEETS Trans National Access Results**

**by Nicole Biebow (Alfred Wegener Institute,  
Helmholtz Centre for Polar and Marine Research)**

## Logistics Review Panel

11

### **Mandate of the Logistics Review Panel:**

- Makes recommendations on the **logistical feasibility** of proposals - primarily regarding the area of operation and timing of cruises during the evaluation process.
- Makes recommendations on the **choice of research vessel** and equipment.

### **Members of the Logistics Review Panel are:**

- **Fleet managers and research vessel operators** nominated by EUROFLEETS beneficiaries and appointed by the EUROFLEETS Consortium. The LRP is composed of permanent members from EUROFLEETS beneficiaries and individual research vessel operators managing those ships which have been requested in proposals under evaluation.
- The Chair was appointed by the EUROFLEETS Consortium

# Logistics Review Panel Process

## Decision on which cruises to allocate ship time was based on:

1. Feasibility based on **geographic availability** of vessel to work area (passage time to mobilisation port not covered under EUROFLEETS )
2. **Availability of vessel** within required time period for survey
3. **Suitability of vessel/vessel equipment** for the proposed work program, e.g., Dynamic positioning, deepwater multibeam, number of berths etc.
4. Other factors, e.g., diplomatic clearance issues.

## Logistics Review Panel Process

- Panel attempted to place as many A1/A2 ranked proposals from oversubscribed vessels on to other vessels with no demand if possible
- Flexibility allowed LRP to increase days on some vessels by redistributing funds from non-required vessels or ROV's
- Highly ranked Global vessel applications were accommodated on Regional vessels if it was feasible and vice-versa
- Lower ranked (close to cut off) applications were urged to re-submit improved applications for 2<sup>nd</sup> round
- Highly ranked applications for the same vessel with a small number of participants in relatively close geographic regions were “merged” (e.g., Marion Dufresne) TORE and Gateway(2013).

## EUROFLEETS Global and Ocean Research Vessels



 OGS-Explora




 Celtic Explorer



 Marion Dufresne



 Polarstern



 L'Atalante

## EUROFLEETS Regional Research Vessels




 Aegaeo



 Akademik




 Belgica



 Bilim 2



 Celtic Voyager



 Dom Carlos I




 García del Cid




 Heincke



 Mare Nigrum



 Oceania



 Ramon Margalef



 Salme



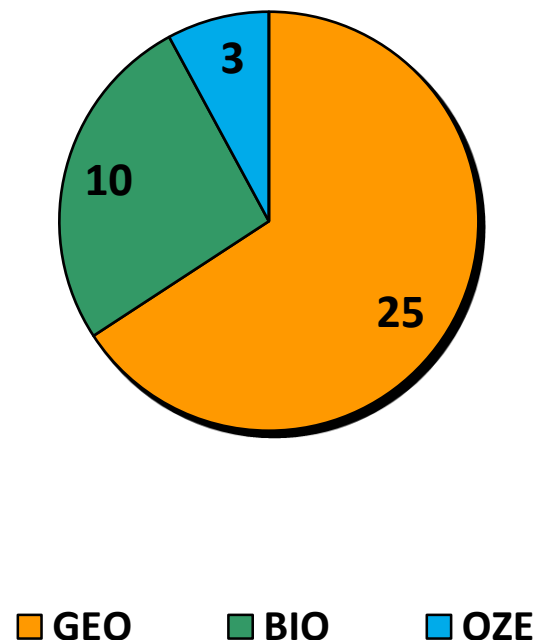
 Urania

# Overview – Full Proposals “Ocean and Regional 1 call”

46 started, 40 submitted, 2 not eligible

23 global (226 days), 15 regional (138 days)

(not requested Aegaeo, Belgica,  
Heincke, Mare Nigrum, Oceania)



| RV                     | Prop | RV                    | Prop |
|------------------------|------|-----------------------|------|
| <i>L'Atalante</i>      | 6    | <i>Akademik</i>       | 2    |
| <i>Celtic Explorer</i> | 4    | <i>Bilim 2</i>        | 1    |
| <i>Marion Dufresne</i> | 8    | <i>Celtic Voyager</i> | 2    |
| <i>OGS-Explora</i>     | 4    | <i>Dom Carlos I</i>   | 3    |
| <i>Polarstern</i>      | 1    | <i>Garcia del Cid</i> | 2    |
|                        |      | <i>Ramon Margalef</i> | 1    |
|                        |      | <i>Salme</i>          | 1    |
|                        |      | <i>Urania</i>         | 3    |
|                        |      |                       |      |



# Overview – Accepted and Rejected Proposals – Ocean and Regional 1

38 proposals - 3 reviews per proposal requested  
(= 114 reviews sought, 103 reviews received)

## ***Result of Scientific Review Panel:***

**Global:** 17 positive, 5 negative

**Regional:** 7 positive, 8 negative

## ***Result of Logistics Review Panel:***

**Global:** 5 accepted, 12 cannot be placed + 1 from regional

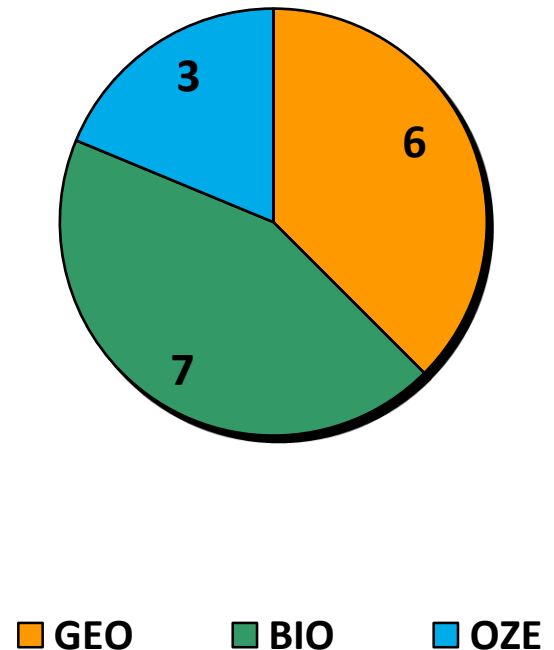
**Regional:** 6 accepted, 1 cannot be placed + 1 from global

8 Regional Ships have no cruise in the first call, they are open for the second call

## Overview – Full Proposals “Regional 2”

17 submitted, all eligible 1 withdrawn  
(not requested Heincke)

| RV                    | Proposals | Days |
|-----------------------|-----------|------|
| Aegaeo                | 4         | 29   |
| <i>Belgica</i>        | 2         | 12   |
| <i>Bilim 2</i>        | 1         | 8    |
| <i>Celtic Voyager</i> | 2         | 18   |
| <i>Garcia del Cid</i> | 2         | 18   |
| Oceania               | 1         | 9    |
| <i>Ramon Margalef</i> | 2         | 16   |
| <i>Salme</i>          | 1         | 20   |
| Urania                | 1         | 5    |
|                       | 16        | 135  |





## Overview – Accepted and Rejected Proposals Regional 2

16 proposals - 3 reviews per proposal requested  
(= 48 reviews sought, 46 reviews received)

### ***Results of the Scientific Review Panel:***

**Regional 2:** 15 positive, 1 negative  
(**Regional 1:** 7 positive, 8 negative)

### ***Results of the Logistics Review Panel:***

**Regional 2:** 8 accepted, 7 cannot be placed

ECO2@Northsea



 Celtic Explorer

SALTFLU



 OGS Explora

FAIVI



 L'Atalante

Tore, Gateway (2013)



 Marion Dufresne

Atlantic CDOM

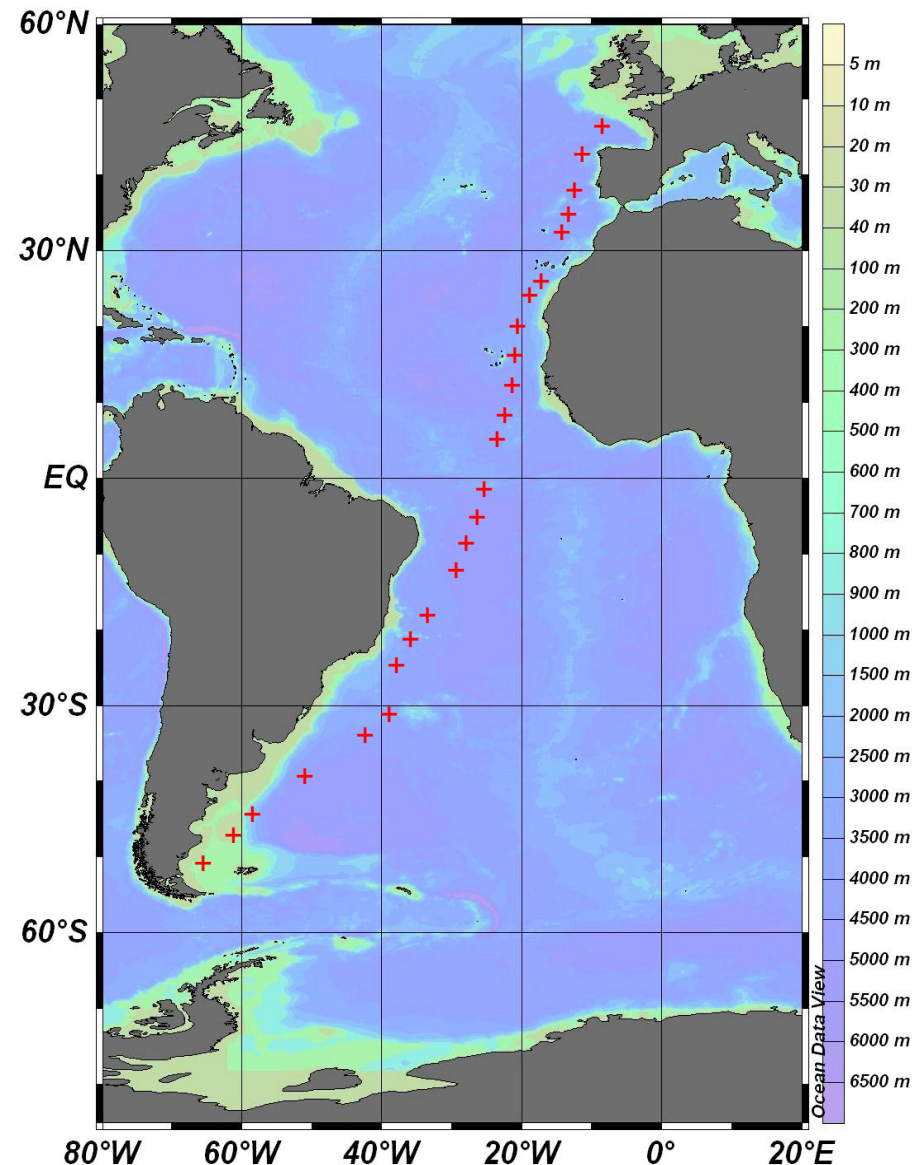


 Polarstern



# EUROFLEETS Global / Oceanic Cruise

## Sources and transformation of coloured dissolved organic material (CDOM) in Atlantic Ocean - Atlantic CDOM



**Research Vessel:** RV Polarstern



**PI:** Dr. Piotr Kowalczyk Institute of Oceanology, Polish Academy of Sciences



amsedis



 Celtic Voyager

CIPIC



 Salme

DIAPICNIA



 Dom Carlos I

CWC-Moira



 Belgica

cumecs



 Urania


SPUX; BIO-OPT



 Akademik

IMPACT; Iberia Forams



 García del Cid


SARAS



 Ramón Margalef


CALDERA



 Aegaeo

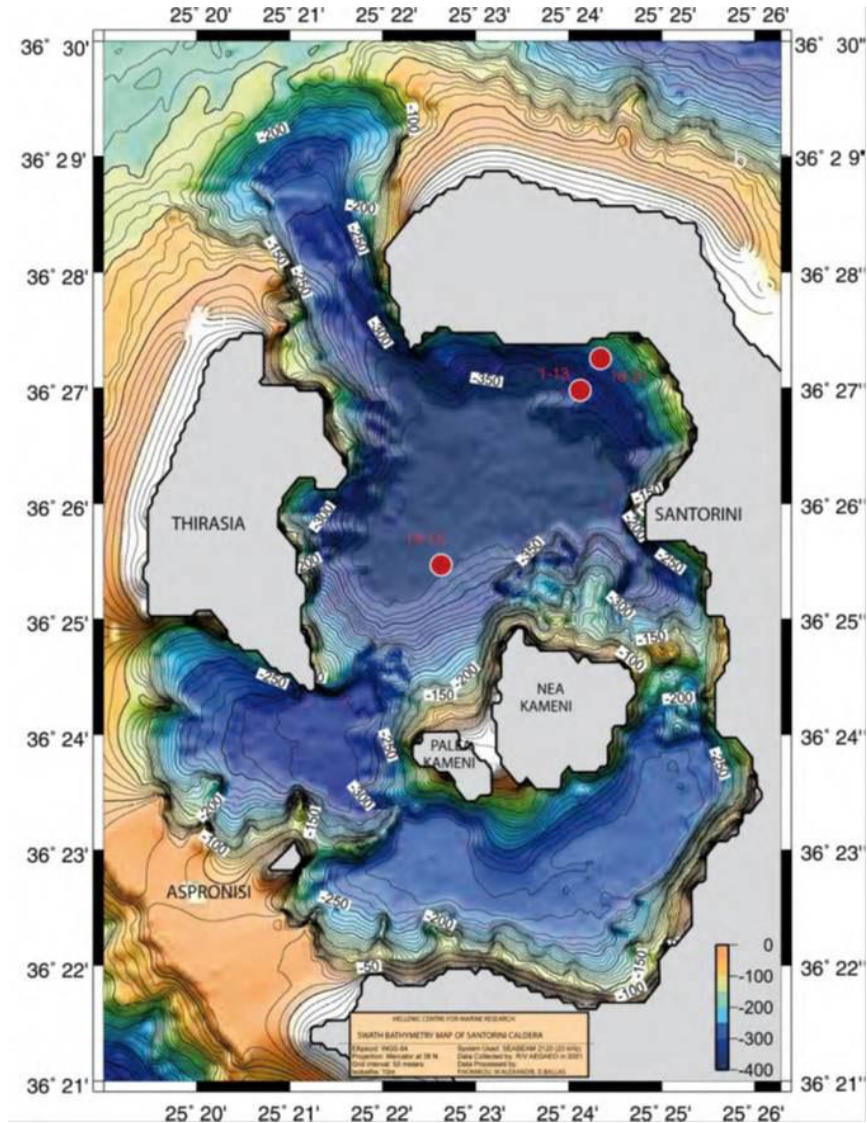
BIO-OPT



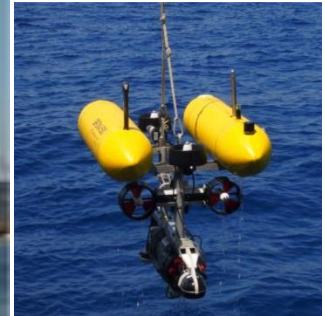
 Mare Nigrum



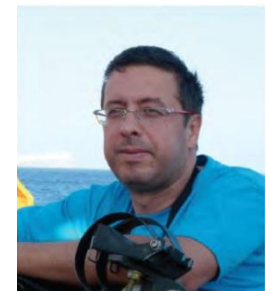
# EUROFLEETS Regional Cruise: Geochemical Characterization and Mapping of the Santorini Caldera's Hydrothermal Vent Field using Deep Submersibles: Caldera 2012



**Research Vessel: RV Aegeo**

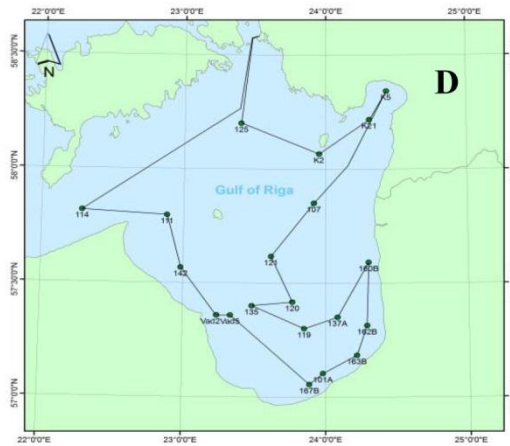
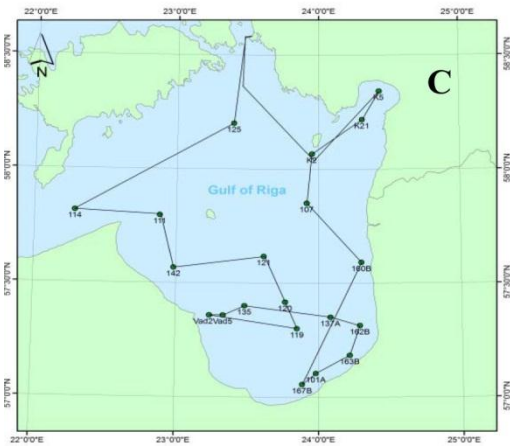
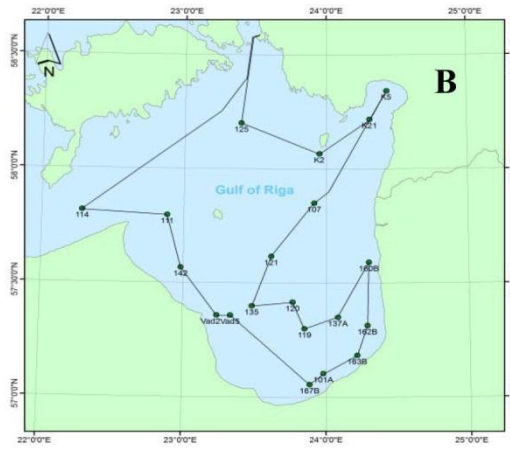
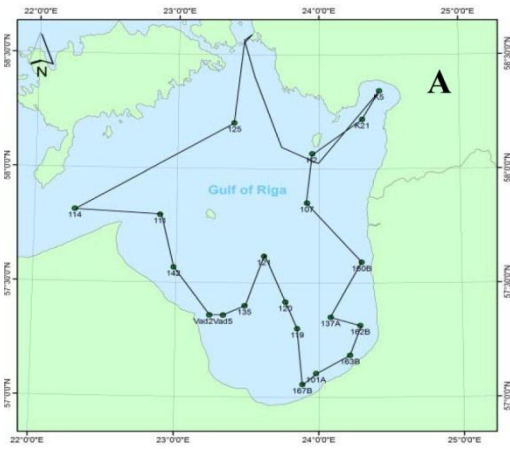


**PI: Dr. Javier Escartin,**  
Equipe Géosciences  
Marines – IPGP; CNRS



# EUROFLEETS Regional Cruise:

## Complex investigation of pelagic-benthic ecosystem interaction : CIPEC



(A- January, B-April, C-August, D-October)

### Research Vessel: RV SALME

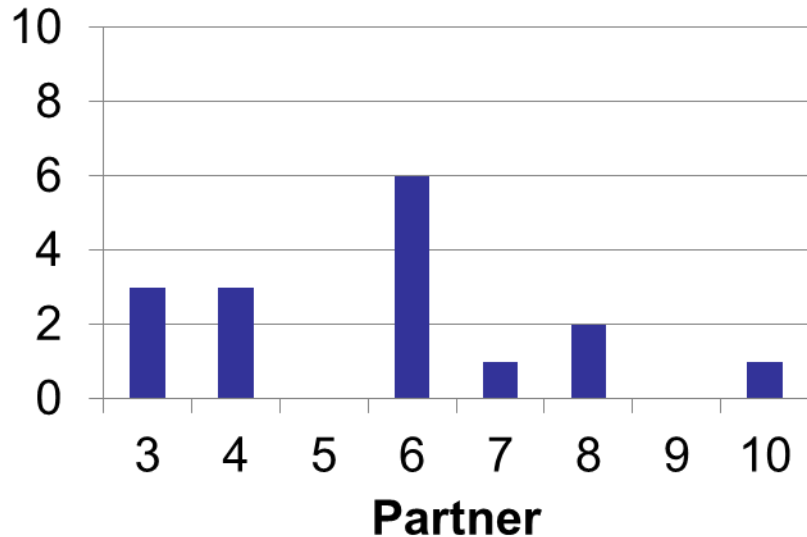


**PI:** Dr. Solvita Strake, Latvian  
Institute of Aquatic Ecology



## Partnership – Full Proposals

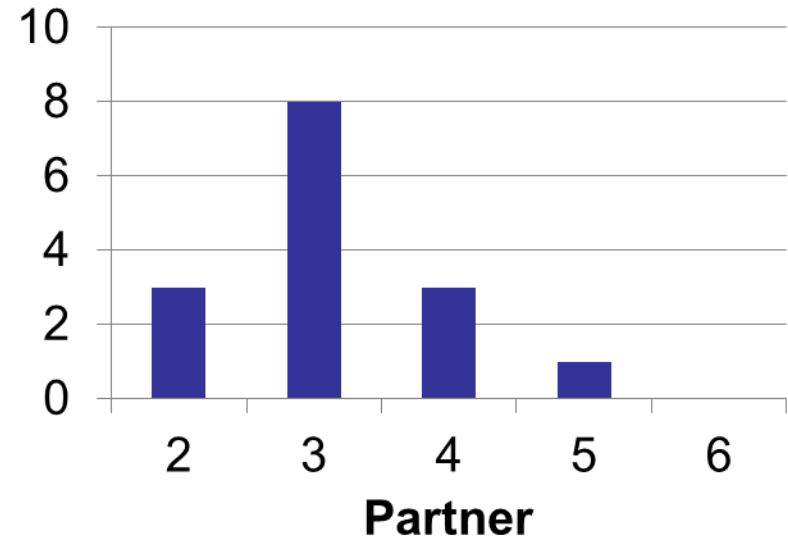
### Regional 2



16 European member states involved incl. 5 new (Bulgaria, Cyprus, Latvia, Malta, Poland)

2 associated countries: Norway, Switzerland  
other countries: Australia, Monaco, Morocco, New Zealand, Ukraine, USA

### Regional 1



14 European member states incl. 3 new (Bulgaria, Latvia, Romania)

1 associated country Turkey

other countries: Albania, Russia, Ukraine, USA



## TNA Summary and lessons learnt:

- **54 proposals** for ship-time on Global / Ocean and Regional Research Vessels have been submitted in two separate calls,
- **16 cruises** have been **successfully carried out** and all cruise reports have been delivered, only marginal troubles or delays in cruises,
- One final cruise on Marion Dufresne with two projects is taken place now,
- **PIs** came from all over Europe and International Collaborators from US, Australia, New Zealand etc. have been involved in the cruises as well
- **Points of criticism** : Preparation of TNA contract with the PI took too long time and delayed the first payment to the PIs significantly – has to be improved
- Evaluation of cruise proposals during the summer break should be avoided

**Another lesson learnt from the SALFTFLU cruise on OGS Explorer:**

**Never schedule a cruise in a harbour that hosts the Formula One Grand Prix of Europe, a national celebration day, and an international football game at the same weekend when the research vessel is supposed to be loaded and the cruise should start.**

**THANK YOU VERY MUCH FOR YOUR  
ATTENTION**

**ANY QUESTIONS?**