

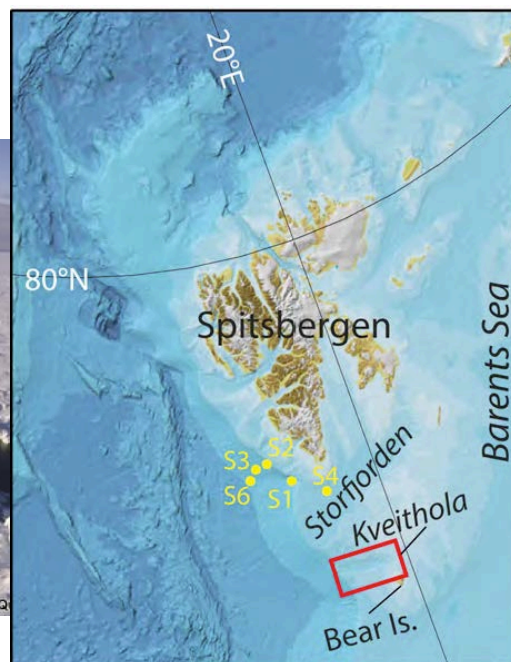


EUROFLEETS RESEARCH SURVEY ACCESS PROGRAMME: 2 berths available onboard the RV Polarstern for European Postgraduate Students of Marine Related Sciences 13rd to 23rd June, 2016

Overview

In the frame of the training activities of the EUROFLEETS2 program, 2 berths are offered onboard the RV *Polarstern* (<http://www.eurofleets.eu/np4/265.html>) to enable postgraduate students (Masters and Doctoral) to participate in the EUROFLEETS BURSTER research survey (<http://www.eurofleets.eu/np4/439.html>).

The cruise will take place from 13th to 23rd June 2016, leaving from Bremerhaven and ending in Longyearbyen (Svalbard).



The BURSTER proposal aims to investigate the hydrographic conditions and the active gas seepage present in the pockmark-field piercing the sediment drift located in the inner part of the Kveithola Trough. Additionally it aims to study climate and environmental changes controlling the evolution of living organisms in extreme environments.

This proposal is to be intended as a preliminary, pilot-type of investigation preceding a master project that should include a more detailed and focused investigation of the Kveithola bio-geochemical system over a larger acquisition area and time-frame.

This is a great opportunity for less experienced researchers and postgraduate students to improve their knowledge and skills in marine sciences.



A total of 2 positions are available on-board for European postgraduate students in the following disciplines:

- Geophysics (bathymetry, seabed backscatter imagery and water column imaging (WCI), PARASOUND, FishFinder, OFOS deep-sea camera)
- Oceanography (CTD, Rosette (biochemistry on water samples), mooring recovery, ADCP, Thermosalinograph, small autonomous probes for pCO₂ and pCH₄)
- Geology (Multi-corer (MUC) and gravity corer, micro-faunal analyses and micropaleontology (portable SEM), gas sampling (Paint cans and/or Head space gas or Rhizons).

The selection will be based on information you should provide in the application form (<https://smartseaschool.wufoo.eu/forms/eurofleets2-rv-polarstern-burster-survey>).

This programme specifically aims at encouraging the participation of postgraduate students from countries with limited access to such equipment.

Please note that ship-time is funded through EUROFLEETS 2. All other expenses, including travel and accommodation, will be paid for by the student.

Applications must be made online by **Monday March 7th at 18:00hrs** (CET).

Successful applicants will be notified by **Friday 11th March**.

Successful applicants must confirm their participation and fill in the Personnel Questionnaire before **Friday 18st March!**

Participation in the cruise depends on you passing the required medical exams, evidence of which must be submitted before **2nd May 2016!**

For further information on Eurofleets please see <http://www.eurofleets.eu>

For further information on the cruise please contact Dr. **Michele Rebesco** at mrebesco@ogs.trieste.it

For further information on the Eurofleets training programme contact Dr. **Andrea Caburlotto** at acaburlotto@ogs.trieste.it