



Regular updates of the EVIOR portal

22 March 2017 – Version 1

Grant Agreement n° 312762

Acronym : EUROFLEETS2

Title : New operational steps towards an alliance of
European research fleets

Activity type: NA
WP N°: 4
Task N°: 4.3
Deliverable N°: D4.43

PROPRIETARY RIGHTS STATEMENT

THIS DOCUMENT CONTAINS INFORMATION, WHICH IS PROPRIETARY TO THE **EUROFLEETS2** CONSORTIUM. NEITHER THIS DOCUMENT NOR THE INFORMATION CONTAINED HEREIN SHALL BE USED, DUPLICATED OR COMMUNICATED BY ANY MEANS TO ANY THIRD PARTY, IN WHOLE OR IN PARTS, EXCEPT WITH THE PRIOR WRITTEN CONSENT OF THE **EUROFLEETS2** COORDINATOR. THIS RESTRICTION LEGEND SHALL NOT BE ALTERED OR OBLITERATED ON OR FROM THIS DOCUMENT.

Reference : EUROFLEETS2-WP4-D4.43-22032017-V1.doc

Security : Public

Document information	
Document Name	Regular updates of the EVIOR portal
Document ID	EUROFLEETS2-WP4-D4.43-220317-V1.doc
Revision	V1
Revision Date	22/03/2017
Author	D.M.A. Schaap – MARIS with contributions from BODC, BSH and EurOcean
Security	Public

Approvals				
	Name	Organisation	Date	Visa
Coordinating team	V.Mazauric	Ifremer		
Activity Coordinator				
WP Leaders				

History			
Revision	Date	Modification	Author
1	22/03/2017	First release	DMA Schaap

Diffusion list				
All partners				
EU				

This document contains information, which is proprietary to the EUROFLEETS2 consortium. Neither this document nor the information contained herein shall be used, duplicated or communicated by any means to any third party, in whole or in parts, except with prior written consent of the EUROFLEETS2 Coordinator.

The information in this document is provided as is and no guarantee or warranty is given that the information is fit for any particular purpose. The user thereof uses the information at its sole risk and liability.

Contents

1.	Introduction	4
2.	Modules of the EUROFLEETS European Virtual Infrastructure in Ocean Research - EVIOR	5
3.	Population, maintenance and usage of the Cruise Programme database	7
4.	Population and maintenance of the Cruise Summary Reports database	13
5.	Population, maintenance and usage of the Research Vessels database	17
6.	Population, maintenance and usage of the European Large Exchangeable Instruments database	20
7.	Conclusions and Recommendations	22

1. Introduction

The objectives of EUROFLEETS2 WP4 TASK 4.3 Subtask 1 are to improve information sharing on planned, current and completed cruises and on details of ocean-going research vessels and specialised equipment owned by the EUROFLEETS2 beneficiaries, to enhance awareness of opportunities among the beneficiaries, and to durably improve cost-effectiveness of cruises. Therefore the WP4 partners maintain the population of databases as part of the European Virtual Infrastructure in Ocean Research (EVIOR). These databases concern:

- Research vessels, maintained by EurOcean with input of RV operators
- Cruise Programmes, maintained by BODC and MARIS with input of RV operators
- Cruise Summary Reports, maintained by BSH and MARIS with input from the SeaDataNet NODC's
- European Large Exchangeable Instruments, maintained by EurOcean with input of research institutes

These operations are continued from the previous EUROFLEETS project in which the initial EUROFLEETS Integrated Information Portal has been developed and launched mid March 2010. In May 2013 this has been upgraded to the European Virtual Infrastructure in Ocean Research (EVIOR) which is operational since.

The EVIOR portal can be found at the EUROFLEETS main website: <http://www.eurofleets.eu>.

This progress report gives an overview of the activities undertaken for populating and maintaining the infobases and the results achieved in the period up to M48 (March 2017). It also gives an overview of the usage of the portal by various users.

2. Modules of the EUROFLEETS European Virtual Infrastructure in Ocean Research - EVIOR

The EUROFLEETS European Virtual Infrastructure in Ocean Research - EVIOR portal can be found from the EUROFLEETS main website: <http://www.eurofleets.eu>



European Virtual RV Platform expanded with modules for a Generic Cruise Planning System and for Dynamic Vessel Tracking & Events System

A generic cruise planning system will facilitate a more efficient and harmonised planning and improved flow of programme information from operators to the Cruise Programme database. Therefore a DEMONSTRATOR of such a Eurofleets generic cruise planning system has been developed and launched. The main aim of the DEMONSTRATOR is to show the features that can be offered by such a cruise planning system. As example, cruises funded in the framework of the Eurofleets Transnational Access Activities (TNA) have been considered, and the results after the planning processes can be consulted. It is an ultimate goal of Eurofleets to establish a common system for giving e-access to underway and operational information and data from sailing research vessels. A first step has been undertaken in analysing and exploring the options by developing and launching a PROTOTYPE Dynamic Vessel Tracking & Events System. It gives dynamic charts of the momentary position and sailing tracks of selected RVs with position, speed, and bearing as well as 24 hour Ship Summary Reports (SSR) by clicking on any position of the vessel track; the SSR includes options to retrieve the event logs for the fixed instruments on board of the RVs.

The Eurofleets project has developed the **European Virtual Infrastructure in Ocean Research (EVIOR)** by way of an integrated information portal, providing up-to-date information about research vessels (RV), cruise programmes, completed cruises and special equipment. This portal is operational and maintained since March 2010 with in 2012 an expansion with large equipment information. In 2013 two more services have been added by means of a Generic Cruise Planning System and for Dynamic Vessel Tracking & Events System. The portal development did not start from scratch, but it integrates and upgrades a number of existing database modules from the SeaDataNet pan-

European marine and ocean data management infrastructure, EurOcean and POGO - Partnership for Observation of the Global Oceans.

Intro to the EUROFLEETS EVIOR portal at the EUROFLEETS website

The EUROFLEETS main website gives a menu option to the EVIOR portal and an introductory page to present the EVIOR portal and its modules. The **European Virtual Infrastructure in Ocean Research (EVIOR)** has been implemented by way of an integrated information portal, providing up-to-date information about research vessels (RV), cruise programmes, completed cruises and special equipment. This portal is operational and maintained since March 2010 with in 2012 an expansion with large equipment information. In 2013 two more services have been added by means of a Generic Cruise Planning System and for Dynamic Vessel Tracking & Events System. The portal development did not start from scratch, but it integrates and upgrades a number of existing database modules from the SeaDataNet pan-European marine and ocean data management infrastructure, EurOcean and POGO - Partnership for Observation of the Global Oceans.

Clicking on the **"Visit the EUROFLEETS Integrated Information Portal"** leads to the main menu of the EVIOR portal as given below.



Eurofleets

Towards an Alliance
of European Research Fleets



European Virtual Infrastructure in Ocean Research (EVIOR)



Sharing information on planned, current and completed cruises and on details of European research vessels and specialized equipment.
Giving e-access to underway events information, sailing tracks and current position of European research vessels

Main menu of the EVIOR portal

The EVIOR portal gives access to the following 4 main infobases:

- **Research Vessel Cruise Programme** database, containing planned cruises per research vessel and owner/operator.
- **Research Vessel** database, containing characteristics of each research vessel, owner/operator contact details and, if available, a link to the ship's web page.
- **Cruise Summary Reports (CSR)** database, containing details of completed cruises and providing a first level inventory of oceanographic measurements made and samples taken during the cruises
- **European Large Exchangeable Instruments (LEXI)** database, containing characteristics of twenty seven categories of instruments, including the previous LEXI – large Exchangeable Instruments InfoBase and the UV - European Underwater Vehicles InfoBase

In addition it gives access to:

- **Prototype for a Dynamic Vessel Tracking & Events System**
- **Generic Cruise Planning System**

This Deliverable D4.43 reports about the population of the 4 main infobases till M48.

3. Population, maintenance and usage of the Cruise Programme database

This database contains planned cruises per research vessel and owner / operator. Entries are to be collated from vessel operators and managed by BODC (contact: Louise Darroch atlorr@bodc.ac.uk) subcontractor to MARIS in EUROFLEETS 2, while the database is technically managed and operated by MARIS.

The Cruise Programme database was developed and launched with instructions and user manual for metadata collection/update by beneficiaries early 2010 and distributed to beneficiaries together with a template spreadsheet to be completed with cruise programme information. In 2015 an update has taken place by adopting the new version of the SeaDataNet Controlled Vocabularies (NVS2.0). The information required for the Research Vessel Cruise Programme Database is summarised below.

Research Vessel Cruise Programme Database Fields

Information requested	Vocabulary	Mandatory?	Comments
ICES Ship Code	C17	Mandatory	Provided on the list of research vessels and contacts
Cruise name/number		Mandatory	
Ship Operator	EDMO	Mandatory	Select entry from EDMO (e.g. EDMO Record Id)
Country of Ship Operator	C32	Mandatory	Select entry from vocabulary (e.g. BE = Belgium)
Departure Port	C38	Mandatory	Select entry from vocabulary (e.g. BSH118 = Lisbon)
Arrival Port	C38	Mandatory	Select entry from vocabulary
Departure Date		Mandatory	Year, month, day (YYYY-MM-DD)
Arrival Date		Mandatory	Year, month, day (YYYY-MM-DD)
Specific Area		Mandatory	Brief description of area to be visited
General Area	C16		These are based on IHB Sea Areas, but with some extensions for SeaDataNet (e.g. 28C = Strait of Sicily).
General Area 2	C16		
General Area 3	C16		
General Area 4	C16		
Latitude (most southerly)		Mandatory	Most southerly latitude (dd.[dd]) between +90 and -90. Latitudes south of the equator are negative.
Latitude (most northerly)		Mandatory	Most northerly latitude (dd.[dd]) between +90 and -90. Latitudes south of the equator are negative.
Longitude (most westerly)		Mandatory	Most westerly longitude (ddd.[dd]) between +180 and -180. Longitudes west of zero are negative
Longitude (most easterly)		Mandatory	Most easterly longitude (ddd.[dd]) between +180 and -180. Longitudes west of zero are negative.
General Discipline 1	P08		Select entry from vocabulary (e.g. DS01 = biological oceanography)
General Discipline 2	P08		Select entry from vocabulary
Chief Scientist name		Mandatory	
Chief scientist e-mail			
Organisation of Chief Scientist	EDMO		Select entry from EDMO (e.g. EDMO Record Id)
Funding Agency 1	EDMO	Mandatory	Select entry from EDMO (e.g. EDMO Record Id)
Funding Agency 2			
Proposal ID			
Project			Name and acronym of main project or experiment with which the cruise is associated (e.g. CLIVAR, RAPID, IMBER)
Subsidiary project 1			Other project or experiment associated with the cruise

Subsidiary project 2			Other project or experiment associated with the cruise
Berths Available	Y, N, U	Mandatory	Choose from Yes (Y), No (N) or Unknown (U)
Link to other relevant web sites 1			e.g. cruise or project website if available
Link to other relevant web sites 2			e.g. cruise or project website if available
Cruise Objectives			Any other relevant information, e.g. brief summary of cruise objective
Cruise status	L14	Mandatory	Use terms from L14 mapped as follows: PO = Scheduled; OP = Current; IA = Completed; CA = Cancelled
Planned cruise track			Name of image file showing planned cruise track if available (gif, jpg, jpeg)

Table: Metadata fields for Cruise Programme database

As far as possible the database has built on the work already carried out for the Partnership for Observation of the Global Ocean (POGO) and utilises the European Directory of Marine Organisations (EDMO) and common vocabularies developed and maintained by the EU FP6 - FP7 SeaDataNet projects.

In early 2010, beneficiaries were requested for the first time to provide the information required using a spreadsheet template. Alternatively provision was made for the information to be entered manually into an online Content Management System (CMS). Ever since each year updates are requested from the RV operators, giving a choice of both options. This has also resulted in a number of RV operators asking for an online account to the Cruise Programme online CMS to enter their entries themselves, while others make use of the spreadsheet template. The current status for the cruise programme database is given below:

Country	Research Vessels	2010	2011	2012	2013	2014	2015	2016	2017
Belgium	Belgica	40	38	37	38	36	36	27	0
	Simon Stevin	0	0	0	0	0	6	0	0
Denmark	Dana	0	0	0	0	0	3	3	14
	Havfisker	0	0	0	0	0	0	0	15
Estonia	Salme	0	5	0	0	0	0	7	6
Finland	Aranda	0	0	0	0	0	10	12	0
France	L'Atalante	5	8	9	0	7	7	0	11
	Le Suroit	5	4	5	1	4	5	0	0
	Marion Dufresne	6	3	6	0	0	1	0	0
	Pourquoi pas?	12	12	9	0	8	7	0	5
	Thalassa	8	3	9	0	6	6	0	7
Germany	Heincke	0	29	21	20	0	19	42	0
	Maria S. Merian	0	0	12	14	9	5	22	3
	Meteor	1	14	16	15	1	7	24	9
	Polarstern	9	11	10	16	11	9	16	18
	Poseidon	0	16	20	22	0	0	30	4
	Sonne	1	7	8	13	8	2	22	16
	Walther Herwig III	0	10	11	10	0	0	22	1
Greece	Aegaeo	21	10	12	0	0	7	10	0
Iceland	Bjarni Saemundsson	0	0	1	1	0	0	0	0
Ireland	Celtic Explorer	17	17	16	17	19	16	16	17

	Celtic Voyager	25	33	29	21	19	29	46	30
Italy	G. Dallaporta	0	23	0	0	0	0	0	26
	OGS Explora	5	0	1	0	0	0	0	0
	Urania	0	21	0	0	24	11	3	18
Netherlands	Pelagia	8	17	11	19	11	10	4	0
Norway	Dr. Fridtjof Nansen	0	0	0	0	0	0	13	0
	G. M. Dannevig	0	0	0	0	0	35	17	0
	G.O. Sars	0	17	19	1	0	18	19	18
	Haakon Mosby	0	0	0	0	0	25	15	0
	Helmer Hanssen	0	0	10	0	0	0	3	1
	Jan Mayen	0	3	0	0	0	0	0	0
	Johan Hjort	0	16	11	0	0	12	10	14
	Johan Ruud	0	0	0	0	0	0	2	3
	Kristine Bonnevie	0	0	0	0	0	0	0	22
	Lance	0	0	12	0	0	0	0	0
Poland	Oceania	11	16	18	19	16	19	17	15
Portugal	Almirante Gago Coutinho	0	0	2	2	2	4	3	3
	Andromeda	0	0	5	6	3	3	5	2
	Auriga	0	0	6	7	3	0	3	5
	D. Carlos I	0	0	0	1	3	4	3	1
Romania	Mare Nigrum	5	10	9	0	0	9	0	0
Spain	Angeles Alvarino	0	0	0	0	0	14	23	20
	Francisco De Paula Navarro	0	0	0	0	0	10	11	10
	Hesperides	8	8	3	0	0	7	5	0
	Ramon Margalef	0	0	0	0	0	18	22	20
	Sarmiento de Gamboa	9	16	7	0	0	5	4	0
Sweden	Argos	19	0	0	0	0	0	0	0
	KBV 001 Poseidon	0	0	11	0	0	0	0	0
	Unknown	0	0	2	0	0	0	0	0
Turkey	Bilim-2	11	16	13	1	0	0	0	0
United Kingdom	Alba Na Mara	0	0	0	0	4	2	1	0
	Cefas Endeavour	0	0	0	17	16	13	15	2
	Discovery	7	11	7	0	2	10	8	14
	Ernest Shackleton	0	0	0	0	0	0	0	0
	James Clark Ross	2	0	0	0	1	4	5	7
	James Cook	4	8	7	1	5	13	5	9
	Scotia	0	15	10	0	3	4	3	0
TOTALS		239	417	395	262	221	425	518	366

Table: Cruise Programme Status since 2010 where the 'Year' is the year of cruise departure

The total number of cruises in the Cruise Programme Database, including information provided *via* the POGO International Cruise Information System prior to the EUROFLEETS project, has increased in the last year from 3125 to now 3554; the breakdown is shown below.

Cruise Programme Status - total number of cruises by year

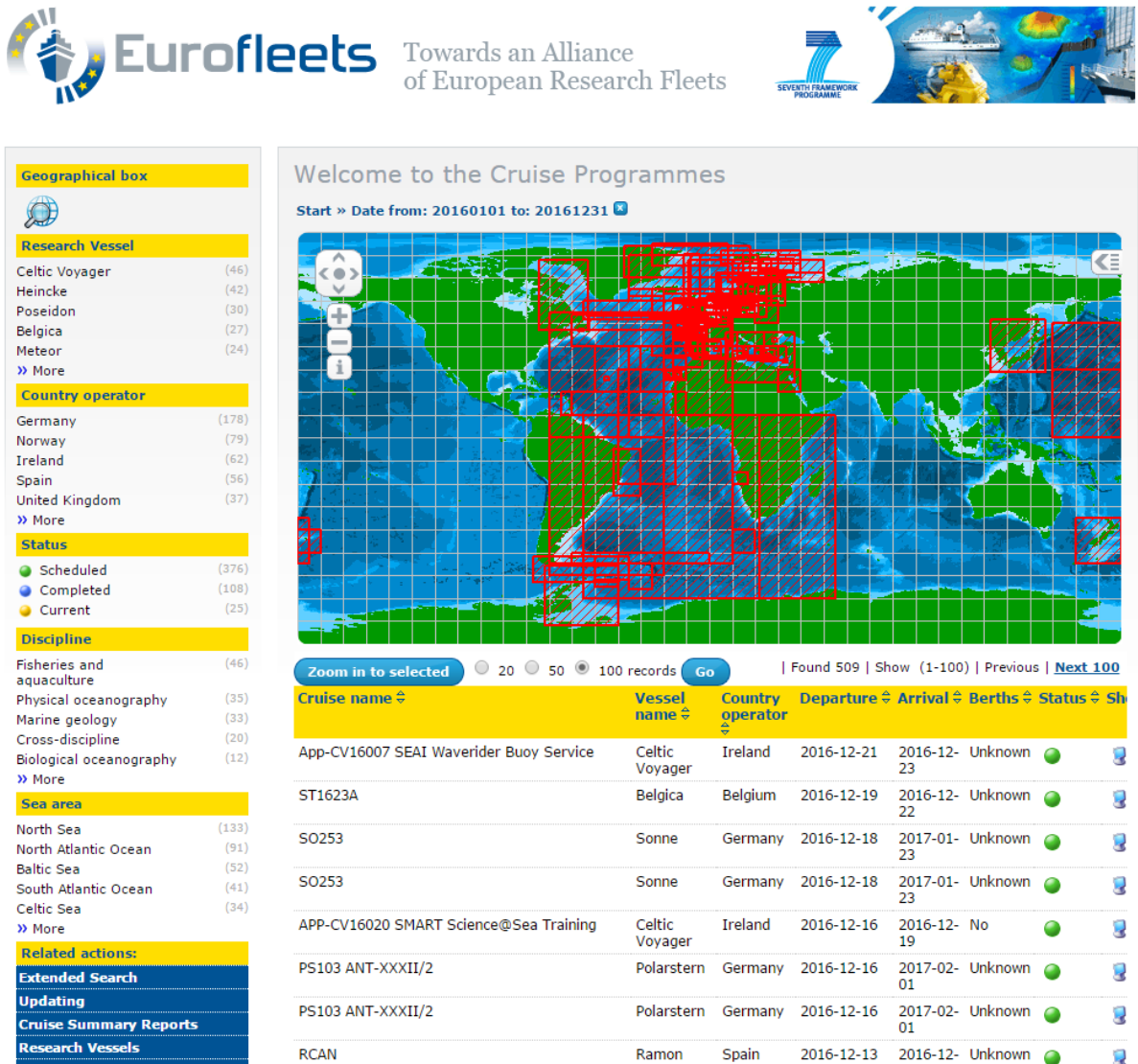
2007 - 225 cruises
 2008 - 253 cruises
 2009 - 221 cruises
 2010 - 239 cruises
 2011 - 417 cruises
 2012 - 395 cruises
 2013 - 262 cruises
 2014 - 221 cruises
 2015 - 425 cruises
 2016 - 518 cruises
 2017 – 378 cruises

Country	No. of Cruises
Belgium	258
Denmark	35
Estonia	18
Finland	22
France	179
Germany	606
Greece	60
Iceland	2
Ireland	367
Italy	132
Netherlands	80
Norway	316
Poland	131
Portugal	76
Romania	33
Spain	220
Sweden	32
Turkey	41
United Kingdom	235

Table: Cruise Programme Status - total number of cruise programmes by country since 2010

Routine activities include continuing to chase up outstanding cruise programmes, responding to beneficiaries' questions and queries, ensuring that also the research vessel information is kept up to date and encouraging submission of also Cruise Summary Reports.

The following images give illustrations of the Cruise Programme database search dialogue.



Welcome to the Cruise Programmes

Start » Date from: 20160101 to: 20161231

Geographical box

Research Vessel

- Celtic Voyager (46)
- Heincke (42)
- Poseidon (30)
- Belgica (27)
- Meteor (24)
- » More

Country operator

- Germany (178)
- Norway (79)
- Ireland (62)
- Spain (56)
- United Kingdom (37)
- » More

Status

- Scheduled (376)
- Completed (108)
- Current (25)

Discipline

- Fisheries and aquaculture (46)
- Physical oceanography (35)
- Marine geology (33)
- Cross-discipline (20)
- Biological oceanography (12)
- » More

Sea area

- North Sea (133)
- North Atlantic Ocean (91)
- Baltic Sea (52)
- South Atlantic Ocean (41)
- Celtic Sea (34)
- » More

Related actions:

- [Extended Search](#)
- [Updating](#)
- [Cruise Summary Reports](#)
- [Research Vessels](#)

Zoom in to selected 20 50 100 records **Go** | Found 509 | Show (1-100) | Previous | [Next 100](#)

Cruise name	Vessel name	Country operator	Departure	Arrival	Berths	Status	Sh
App-CV16007 SEAI Waverider Buoy Service	Celtic Voyager	Ireland	2016-12-21	2016-12-23	Unknown	●	
ST1623A	Belgica	Belgium	2016-12-19	2016-12-22	Unknown	●	
SO253	Sonne	Germany	2016-12-18	2017-01-23	Unknown	●	
SO253	Sonne	Germany	2016-12-18	2017-01-23	Unknown	●	
APP-CV16020 SMART Science@Sea Training	Celtic Voyager	Ireland	2016-12-16	2016-12-19	No	●	
PS103 ANT-XXXII/2	Polarstern	Germany	2016-12-16	2017-02-01	Unknown	●	
PS103 ANT-XXXII/2	Polarstern	Germany	2016-12-16	2017-02-01	Unknown	●	
RCAN	Ramon	Spain	2016-12-13	2016-12-15	Unknown	●	

Figure: Cruise Programme database –search for cruises in 2016

The next image gives the details of a selected Cruise Programme entry. It contains various hyperlinks to retrieve:

- More information about the Research Vessel from the EUROFLEETS RV database by Shipcode and Vessel name
- More information about the Ship Operator from the SeaDataNet EDMO (European Directory of Marine Organisations) database
- More information about the Chief Scientist Organisation from the SeaDataNet EDMO database
- More information from the Funding Organisation from the SeaDataNet EDMO database
- More information about Cruise Summary Reports of the Research Vessel from the EUROFLEETS Cruise Summary Reports database

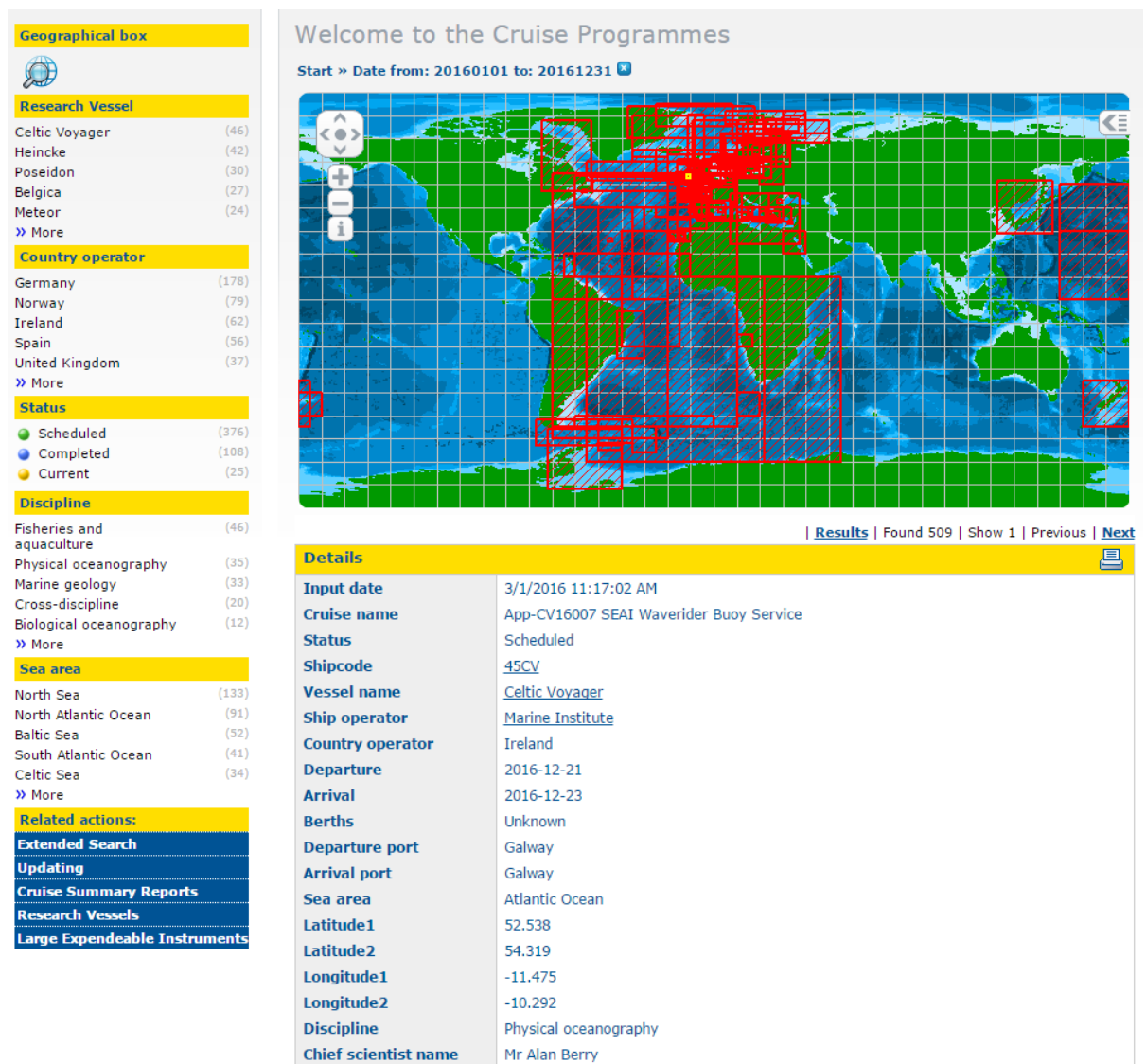


Figure: Cruise Programme database –Detailed factsheet for one planned cruise

Usage of the Cruise Programme database

The Cruise Programme database service was launched in March 2010 and user statistics are maintained using AW Stats. The following table gives the number of users and visited pages since March 2010. This also includes the related Cruise Summary Reports database service.

Year	Unique visitors	Number of visits	Pages	Hits	Bandwidth (MB)
2010	377	627	16,568	43,974	233.36
2011	520	769	23,837	55,917	356.42
2012	848	1,186	35,712	75,864	425.39
2013	1,309	2,815	38,874	73,820	1,710.00
2014	1,314	2,028	19,270	39,047	892.79
2015	972	1,545	36,268	63,909	1,700.00
2016	1,273	1,788	36,718	67,593	4,260.00

Table: Web statistics for the Cruise Programme and Cruise Summary Reports databases

4. Population and maintenance of the Cruise Summary Reports database

The Cruise Summary Reports (CSR) database contains details of completed cruises and provides a first level inventory of oceanographic measurements made and samples taken during the cruises. It is managed as a SeaDataNet Directory by BSH from Germany, who is subcontractor to MARIS in EUROFLEETS2.

In the first EUROFLEETS project a dedicated version of the CSR User Interface has been developed in a cooperation between MARIS and BSH. The EUROFLEETS CSR database is updated automatically by web service from the SeaDataNet CSR database which serves as master containing also many historical reports. The EUROFLEETS CSR database contains entries from 2005 onwards. In 2015 activities were undertaken in EUROFLEETS to upgrade the CSR database, import and user interface to using the new SeaDataNet vocabularies (NVS2.0).

The maintenance of the CSR database is done following the current SeaDataNet practice. The Chief Scientist of a cruise must report a Cruise Summary Report (CSR) immediately after the cruise.

There are 2 routes to submit new CSR entries, depending on the country:

- In a number of European countries Chief Scientists of research cruises are requested to report CSR's to their National Oceanographic Data Centre (NODC) directly after the cruise, using a local system. The NODC will then make sure that the CSR's are included in the overall SeaDataNet CSR database. The list of European NODC's can be found at: <http://eurofleets.maris2.nl/csr-list-nodcs.html>
- in other countries the Chief Scientists of research cruises are requested to report CSR directly themselves via the online CSR Content Management System (CMS).

The Cruise Summary Report database currently contains the following content:

Year	No. of Cruise Summary Reports	No. of countries
2005	843	23
2006	958	26
2007	1061	25
2008	1462	24
2009	1502	26
2010	1703	24
2011	1091	25
2012	886	24
2013	900	24
2014	801	24
2015	653	19
2016	133	12

Table: Number of Cruise Summary Reports – 22 March 2017

The overview per country of ship per year is given in the following Table.

Country	2005	2006	2007	2008	2009	2010	2011	2012	2013	2014	2015	2016
Albania	0	1	1	0	0	0	0	0	0	0	0	0
Algeria	0	0	0	0	2	0	0	0	0	0	0	0
Belgium	52	71	70	77	90	102	99	34	30	9	3	0
Bulgaria	5	6	2	1	20	0	5	7	14	8	14	0
Canada	0	0	0	0	0	0	0	0	0	0	2	0
Croatia	16	30	19	19	12	13	17	21	18	14	26	0
Cyprus	11	1	2	6	8	6	7	8	2	4	0	0
Denmark	0	7	7	18	23	22	7	8	4	3	4	2
Estonia	0	0	0	0	0	46	36	30	22	37	27	0
Faroe Islands	0	0	0	0	17	20	22	21	21	20	20	0
France	191	207	215	252	195	237	217	210	216	206	213	3
Georgia	0	0	0	2	4	0	0	1	1	2	0	0
Germany	137	144	148	127	81	102	127	150	140	136	110	50
Greece	4	8	12	1	0	7	8	10	5	11	0	0
Iceland	4	4	5	4	4	4	4	4	4	3	1	0
Ireland	35	46	48	56	55	50	53	43	39	39	20	0
Israel	6	4	3	4	1	1	2	1	0	0	0	0
Italy	14	4	15	18	8	4	2	8	12	17	6	1
Latvia	11	13	15	15	5	2	4	9	6	3	3	0
Lithuania	4	4	4	4	3	8	0	2	15	19	2	0
Netherlands	8	8	11	7	13	24	22	12	16	8	9	4
Norway	45	58	43	57	68	58	59	64	63	74	64	40
Poland	0	4	6	3	6	9	5	11	6	7	6	4
Portugal	0	0	1	1	0	1	1	0	13	5	5	0
Romania	5	8	9	11	5	5	4	3	2	3	0	0
Russian Federation	14	3	0	0	3	4	5	0	0	0	0	0
Slovenia	0	13	64	25	34	34	34	34	36	33	0	0
Spain	29	41	37	54	48	55	55	52	73	76	67	1
Sweden	40	62	44	44	59	66	56	54	42	34	35	24
Tunisia	5	20	2	3	2	0	0	0	0	0	0	0
Turkey	10	5	8	14	26	27	30	5	28	24	0	0
Ukraine	1	1	7	3	5	0	0	0	0	0	0	0
United Kingdom	196	185	263	636	705	796	210	84	72	6	16	4
TOTALS	843	958	1061	1462	1502	1703	1091	886	900	801	653	133

Table: Number of Cruise Summary Reports per country per year

Welcome to the Cruise Summary Reports

Search

Free search

Country of ship

Date (yyyy-mm-dd) from to

Ship(s)

Project

Cruise name/nr

Discipline

Ports

Country of institute

Oceans/Sea area(s)

Data type(s)

Institute(s)

© Powered by SeaDataNet

[Search](#) [Reset](#)

Cruise Summary Reports database –User Interface

Welcome to the Cruise Summary Reports

Search results

20 50 100 records [Go](#) | [Refine query](#) | [New query](#) | Found 8805 | Show (1-20) | [Previous](#) | [Next 20](#)

Platform/Ship Name	Country of ship	Cruise name	From	To	Show
Ramon Margalef	Spain	RADCAN 1307	2013-07-14	2013-07-16	Show
Angeles Alvarino	Spain	ECOTRANS 0713	2013-07-02	2013-07-16	Show
Lotty	Sweden	2013K17	2013-06-27	2013-06-27	Show
Ramon Margalef	Spain	ASIMUTH2013	2013-06-17	2013-06-21	Show
Cornide de Saavedra	Spain	MEDITS_ES_1305_3	2013-06-14	2013-06-28	Show
Johan Hjort	Norway	2013205	2013-06-12	2013-06-28	Show
Ramon Margalef	Spain	RADCAN 201306	2013-06-10	2013-06-12	Show
Belgica	Belgium	2013/17	2013-06-10	2013-06-18	Show
Haakon Mosby	Norway	2013614	2013-06-08	2014-06-10	Show
Angeles Alvarino	Spain	INGRES3-8 / STOCA 2013 06 / ECOBOGUE 0613	2013-06-06	2013-06-14	Show

Cruise Summary Reports database –Result of search for all CSR entries



Welcome to the Cruise Summary Reports

Details

| [Refine query](#) | [New query](#) | [Results](#) | Found 3851 | [Show 1](#) | [Previous](#) | [Next](#)

Details of 2011209 (BSH20113211)

General Information

Platform/Ship	Johan Hjort
Cruise name	2011209
Cruise begin	2011-06-16
Cruise end	2011-06-21
Port of departure	Bodø
Port of return	Bergen
Chief Scientist(s)	Dr. Erling Kaare Stenevik - Institute of Marine Research
Responsible Laboratory	Institute of Marine Research
Country	Norway

Location

General Ocean Areas	Norwegian Sea			
Marsden squares (S,N,E,W)	251 (60.0, 70.0, 10.0, 20.0) 252 (60.0, 70.0, 0.0, 10.0)			
Bounding Box(es)	South	West	North	East
	60	0	70	10
	60	10	70	20

Specific Geographic Areas Norwegian shelf

Objectives

Description Study the abundance and distribution of postlarval Norwegian spring spawning herring and their predators on the Norwegian shelf and in selected fjords.

Additional information

Parameters measured Acoustic reflection on marine organisms.
Ammonia
CTD stations
Eggs and larvae
Nitrate
Nitrite
Pelagic fish
Phosphate
Phytoplankton pigs (eg chlorophyll, fluorescence)
Routine standard measurements

Cruise Summary Reports database –Details of a selected CSR entry

5. Population, maintenance and usage of the Research Vessels database

The European Research Vessel InfoBase, launched in 2006, is managed by EurOcean and contains characteristics of each research vessel (RV), owner/operator contact details and, if available, a link to the ship's web page. For EUROFLEETS a dedicated version of the European Research Vessels InfoBase has been developed by EurOcean at <http://www.eurofleets.eu/rvs/>.

The EUROFLEETS European Vessel Database module of the European Virtual RV Platform was launched by EurOcean on March 5th 2010. Currently it contains information on: 306 Operating Research Vessels and 63 Out of Service, larger than 10 meters (from the coastal to high seas). Additionally the Database provides information of owner/operator contact details and, if available, a link to the ship's web page. The available information can be accessed by using a set of drop-down menus (Vessel Name; Vessel Category; Country; Length; Main Activity and Availability for charter) as well as, through a dedicated query link by using a research vessel ICES Shipcode.

The European Research Vessel InfoBase is regularly updated by the RV operators/owners either by a dedicated request addressed to the EurOcean Office, or by direct update by filling-in an electronic form available through the homepage (<http://www.rvinfobase.eurocean.org/>). All requested updates are however only made public after validation by EurOcean Team, the InfoBase manager and master editor.

Even though the InfoBase is continuously updated, EurOcean releases an annual update request to all the RV operators/owners as to guarantee the relevance of the InfoBase information. As a result of the undertaken activities, 181 RV operators/owners, including the planned/under construction RV's (not available in the EUROFLEETS European Vessel Database) were last contacted on June 4th 2016, which turned in information updates of 5 of the 22 EUROFLEETS vessels (circa 22.7%), and 26 of the 306 remaining Infobase RV's (circa 8,4%), as showed in the Table below.

Update Status	EUROFLEETS RV's	Remaining Infobase RV's
	Update N.º	Update N.º
2017	0	0
2016	5	26
2015	5	36
2014	3	11
2013	2	16

Table: European Research Vessel InfoBase update status of the operating and out of service RV per Year for the period of the EUROFLEETS Project (2013-2017).

Due to the nature of the infrastructures, most updates are related to the contact of the vessel operator/owner and therefore, even if no update is made after the inclusion of the vessel in the InfoBase the vessel available information can be updated.

Usage of the EUROFLEETS Research Vessel database

For the given date the InfoBase registered a total of 2243 Visits, since the beginning of the project. In the chart below it is possible to establish a correlation between the visits picks and the launch of EUROFLEETS calls and the update request.

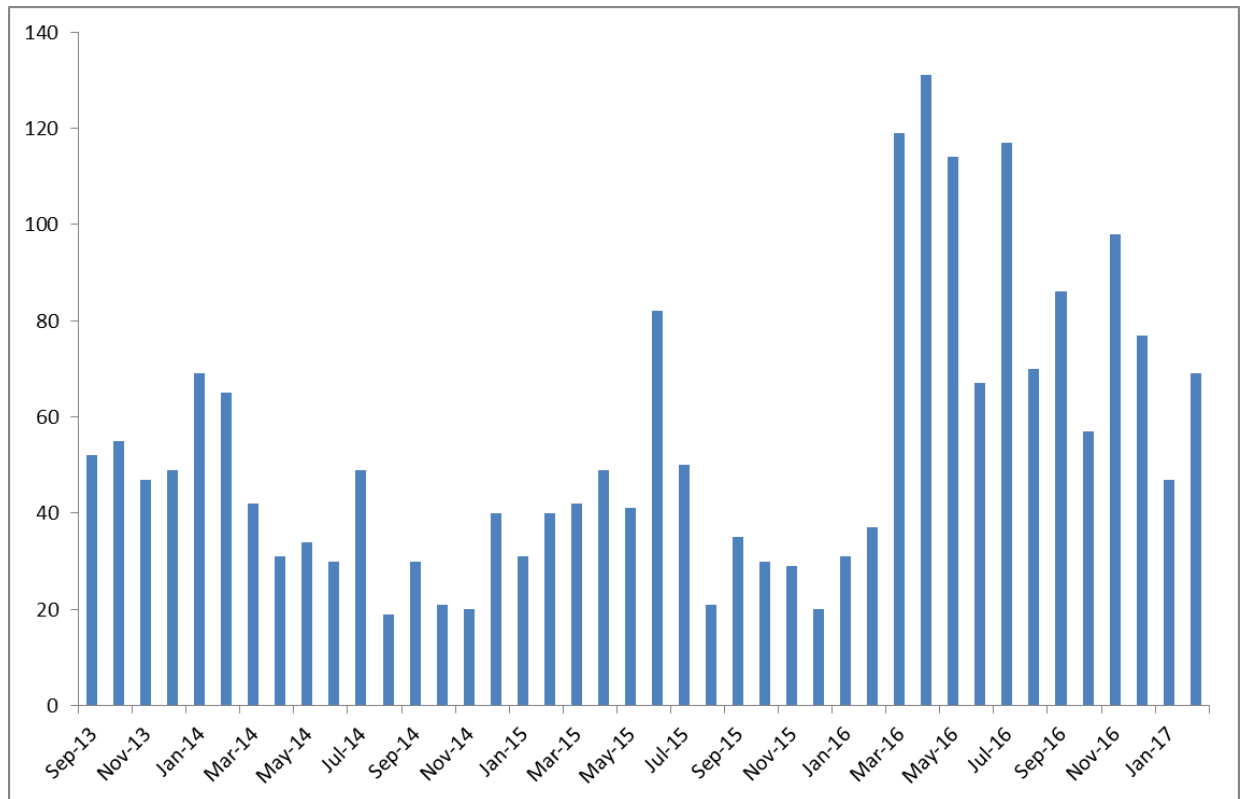


Figure: Monthly evolution of the unique page views of the EUROFLEETS European Vessel Database Module

[Back to Eurofleets homepage](#)

Towards an Alliance of European Research Fleets



Eurofleets European Vessel Database



This directory is a searchable database of European research vessels. Operators/managers can enter/update their research vessels [online](#). Please contact the [helpdesk](#) for an account.

[Cruise Programmes database](#)

[Cruise Summary Reports database](#)

© Powered by 

Operating RVs

Prepare your query with a combination of the following criteria:

<input type="text" value="[Vessel Name]"/>	<input type="text" value="[Vessel Category]"/>
<input type="text" value="[Country]"/>	<input type="text" value="[Length]"/>
<input type="text" value="[Main Activity]"/>	<input type="text" value="[Available for charter]"/>
<input type="text" value="Operating RVs"/>	<input type="button" value="reset"/> <input type="button" value="search"/>

Search results Your search has returned 264 vessels.

[Print PDF](#)

Vessel Name	Country	Category	Length
Aade	Germany	Local/Coastal	12.50 m
Actinia	United Kingdom	Local/Coastal	10.85 m
Aegaeo	Greece	Oceanic	61.50 m
Águas Vivas	Portugal	Local/Coastal	11.00 m
Akademik	Bulgaria	Oceanic	55.50 m
Akademik A. Karpinsky	Russia	Global	104.50 m
Akademik Ioffe	Russia	Global	117.10 m
Akademik Lazarev	Russia	Global	81.80 m
Akademik Mstislav Keldysh	Russia	Global	122.20 m
Akademik Nemchinov	Russia	Global	84.00 m

Research Vessel database –User Interface for searching Research Vessels

[Back to Eurofleets homepage](#)

Towards an Alliance of European Research Fleets



Eurofleets European Vessel Database



[Back to Search](#)

[Pourquoi pas?](#)

[Print PDF](#)



Status Operating
Main activity Multiple activities
Operating area --
Country France
ICES code 35PK
NODC code
Call sign FMCY
Year built 2005
Homeport
Length 107.60 m
Avail. for charter No
Last update 15.06.2007

This directory is a searchable database of European research vessels. Operators/managers can enter/update their research vessels [online](#). Please contact the [helpdesk](#) for an account.

© Powered by 

Contact Information

Owner Institut français de recherche pour l'exploitation de la mer (IFREMER)

Operator IFREMER / GENAIVR BREST

Contact person Jean Xavier Castrec

Address Centre IFREMER de Brest, BP 71

29280 PLOUZANE

France

Telephone +33 298 224453

Fax

Website <http://www.ifremer.fr/flotte/navires/hauturiers/pourquoipas/index.htm>

Email jean.xavier.castrec@ifremer.fr

Observations --

Technical Details

Main Dimensions

Length 107.60

Draft (m) 6.9

Main Vessel Activity

Main Activity Multiple activities

Operating area --

Research Vessel database –Details of a Research Vessel

6. Population, maintenance and usage of the European Large Exchangeable Instruments database

The European Large Exchangeable Instruments, launched in November 24th 2011, is managed by EurOcean and contains characteristics of twenty seven categories of instruments, included in the previous EurOcean_LEXI – Large Exchangeable Instruments InfoBase and the EurOcean_UV - European Underwater Vehicles InfoBase. For EUROFLEETS a dedicated version of the European Large Exchangeable Instruments InfoBase has been made operational by EurOcean at <http://www.eurofleets.eu/lexi/>.

The EUROFLEETS European Large Exchangeable Instruments Database module of the European Virtual RV Platform, launched by EurOcean, was integrated in the European Virtual RV Platform on March 18th 2012. Presently it contains information on 149 (instruments as well as information of owner/operator contact details and, if available, a technical details document. The available information can be accessed by using a number of pull-down menus (Free Text; Type of Instrument; Country and Depth Range).

Similarly to the RV's InfoBase, the LEXI InfoBase it is regularly updated by the instrument operators/owners either by a dedicated request addressed to the EurOcean Office or, by direct update by filling-in an electronic form available through the InfoBase homepage (http://www.lexiinfobase.eurocean.org/insert_uv.jsp?new=t). All requested updates are however only made public after acceptance by EurOcean Office, the InfoBase manager and master editor.

Even though the InfoBase is continuously updated, EurOcean releases an annual update request to all the instrument operators/owners as to guarantee the relevance of the InfoBase information. As a result of the undertaken activities, 75 operators/owners were contacted on June 4th 2016, which translated in information updates 10 of the 149 instruments (circa 6,7%).

Usage of the EUROFLEETS Large Exchangeable Instruments database

The EUROFLEETS Large Exchangeable Instruments database registered, for the given period, 1621 in the chart below it is possible to visualise the monthly evolution of the InfoBase.

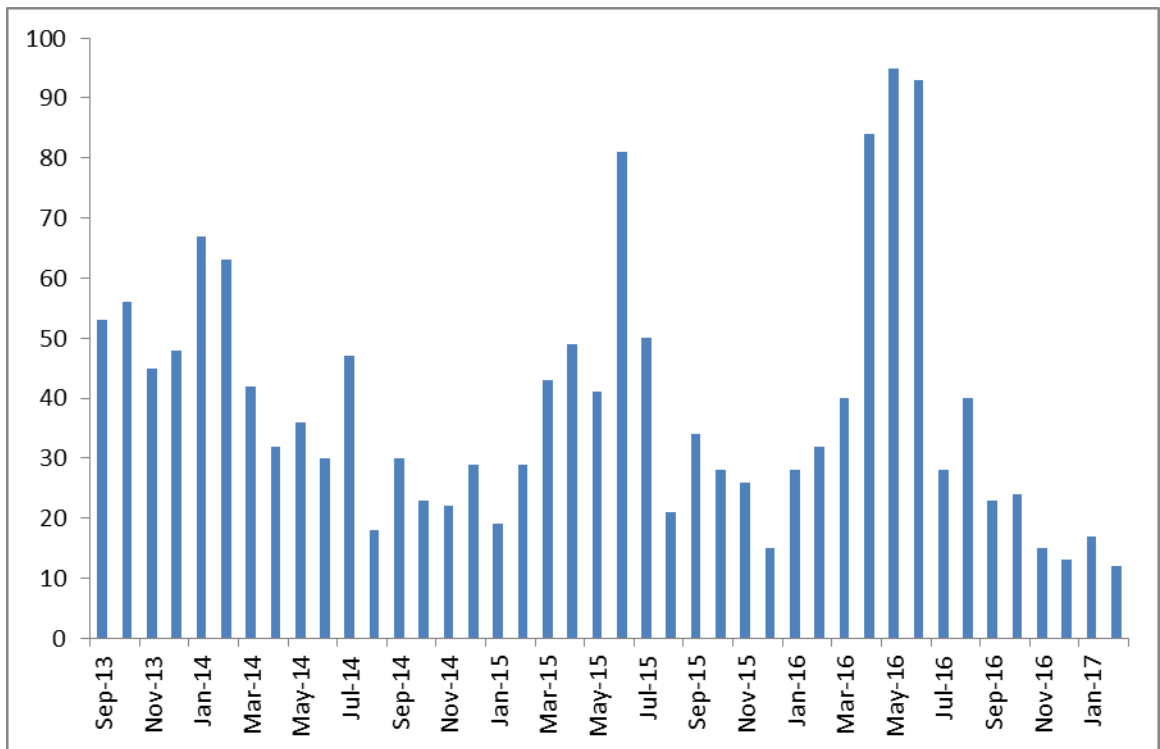




Figure: Monthly evolution of the unique page views of the EUROFLEETS Large Exchangeable Instruments Module

[< Back to Eurofleets homepage](#)
Towards an Alliance of European Research Fleets



European Large Exchangeable Instruments




This directory is a searchable database of Large Exchangeable Instruments used in Europe for Scientific research. Operators/managers can [enter/update](#) their research instruments online or contact the [helpdesk](#).

Cruise Programmes database

Cruise Summary Reports database

Research Vessels database

© Powered by 

Prepare your query with a combination of the following criteria:

Search results Your search has returned 118 instruments.

Name	Type of instrument	Country	Depth
ABYSS	Autonomous underwater vehicle	Germany	6000
Argus	Manned submersibles	Russia	600
ASTERx	Autonomous underwater vehicle	France	3000
Autosub	Autonomous underwater vehicle	United Kingdom	1600
Autosub6000	Autonomous underwater vehicle	United Kingdom	6000
AUV ISR	Autonomous underwater vehicle	Portugal	100
AUV Light	Autonomous underwater vehicle	Portugal	150
AWI-OFOS (Ocean Floor Observation System)	Towed camera systems	Germany	
Bathysaurus	Remote Operated Vehicles	Norway	6000

European Large Exchangeable Instruments Database –User Interface for searching Large Exchangeable Instruments

Reference : EUROFLEETS2-WP4-D4.43-22032017-V1.doc

Security : Public

Page 21/22



Eurofleets European Large Exchangeable Instruments


[< Back to Search](#)
[Print PDF](#)


This directory is a searchable database of Large Exchangeable Instruments used in Europe for Scientific research. Operators/managers can [enter/update](#) their research instruments online or contact the [helpdesk](#).

© Powered by 

ABYSS

Instrument Information and Contact

Name	ABYSS
Owner	Helmholtz Center for Ocean Research (GEOMAR)
Operator	GEOMAR
Type	Autonomous underwater vehicle
Contact person	Klas Lackschewitz
Link Contact Person	klackschewitz@geomar.de
Phone	49 (0)431 600-2132
Address	Wischhofstr. 1-3 D-24148 Kiel
Country	Germany
Link Institution	http://www.geomar.de/institut/einrichtungen/technik-und-logi...
Model	Remus 6000
Manufacturer	Hydroid, LLC
Year Built	2008
Last Update	2012/05/17

General Specifications

Lenght (m)	3.84
------------	------

European Large Exchangeable Instruments Database–Details of a Large Exchangeable Instrument

7. Conclusions and Recommendations

It can be concluded that the 4 databases are well maintained on a European scale as there is a regular population of database records by a wide number of countries. The operation of these modules has been continued from the previous EUROFLEETS project and its maintenance has been well established as part of the EUROFLEETS 2 project. The overall EUROFLEETS website has been revised recently and this gives a more prominent position for the EVIOR platform which leads to increasing number of visitors. Overall the Cruise Programmes as considered as very useful for planning purposes, such as supporting deployments of ARGO floats, while at the same time there is still quite some delay in getting the planning info from the RV operators. The Cruise Summary Reports are instrumental for data centres to follow up scientists and their data sets collected during cruises. As part of POGO and also the Ocean Data Interoperability Platform project (ODIP) the CSR is now also increasingly populated by USA through cooperation with the R2R project and Australia. It is recommended to continue the EVIOR activities, also as part of a possible EUROFLEETS 3 project as it gives direct insight in the actual cruises as undertaken by the European Research Vessel fleet and also provides very relevant information about the characteristics of the research vessels and large exchangeable equipment.