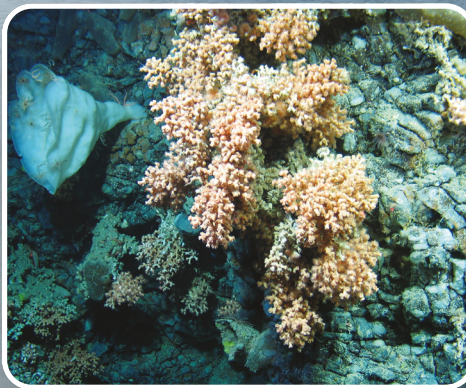


# Exploring Our Marine

## ROV Holland 1

- An 'ROV' or Remotely Operated Vehicle is an unoccupied, highly manoeuvrable underwater ROBOT which is used to explore the depths of our ocean.
- The Marine Institute's ROV Holland 1 is equipped with ROBOTIC ARMS, sensors and a CAMERA SYSTEM to observe our seabed.
- Using the ROV Holland 1, an Irish-led scientific expedition in 2011 discovered the Moytirra Deep Sea hydrothermal vent field along the Mid-Atlantic Ridge, north of the Azores, Portugal.
- Using the ROV Holland 1, Irish Scientists in 2017 recorded the deepest known occurrence of a cold-water coral reef off the continental shelf at 1,600m deep.



*Foras na Mara*  
*Marine Institute*

The Marine Institute is Ireland's national agency responsible for marine research, technology development and innovation in Ireland. By building ocean knowledge and delivering ocean services, the Institute aims to empower Ireland and its people to safeguard and harness our ocean wealth.

**marine.ie**